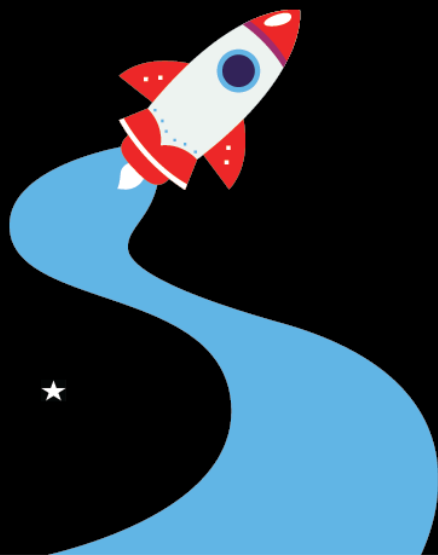




Out of  
this world



**cubjam**  
2026

**23 - 29 May 2026**

**Phasels Wood Activity Centre**

# Index

Welcome to Cubjam 2026	2
Programme	3
Expectations	4-5
Pricing	6
Explorers	4
Arrival & Departure	7
Site Information	8-11
How To Find Us	13
Contact Us	14

## About Us...

Cubjam is a Hertfordshire Scouts Activity Centre's Event, run with the support of a wide range of Scouting volunteers – many of whom are members of Team Hertfordshire and have been involved since the beginning of Cubjam.

Bookings for Cubjam are managed by the Hertfordshire Scouts Bookings Team, the event is held at Phasels Wood Activity Centre owned and operated by Hertfordshire County Scout Council (HCSC).

# Welcome to Cubjam 2026

We are incredibly excited to be able to bring you the details of Cubjam 2026. We look forward to welcoming back Cubjam regulars and groups who are new to the event. Cubjam offers Cubs the chance to experience the joys of camping whilst exploring what outer space has to offer!

During the core programme each subcamp will have the chance to experience land or space activities including travelling to adventurous planets.

We are always looking for volunteers to help run Cubjam, if you feel this is something you can do, either yourself or as a Group, please get in contact with us.

Included in this guide are most things that you need to know to enjoy Cubjam 2026- should you have any further questions please drop us an email at [info@phaselswood.org.uk](mailto:info@phaselswood.org.uk).



Doug Stack  
Manager Activity Centres and Support Functions



## **Cubjam travels “Out Of This World” for 2026**

Our theme of “Out of this world” aims to inspire Cubs journeys through space and other unimaginable places. Time to think and imagine what happens out of this world, whether it be space or pure imagination that contributes to building the world we live in today. Whilst we will be dressing the site following the theme and using it in our events and entertainment, your support is key in bringing our journey ‘Out of this world’ to life.

In time for your return to Cubs after the Easter break in 2026, you will be allocated a “Spaced theme” as your Subcamp. Using this theme, we want to see your creative side as a Cub Pack/District... with prizes to be won!

- Decorate your contingent camping area in theme.
- Create a suitable entrance gateway in theme.
- Design a Cubjam flag to represent your contingent, your Subcamp theme and Cubjam - (more information will follow on this to contingents).
- Select 3 members of your contingent to introduce you at the opening ceremony. They should be in costume for your theme and be able to tell everyone in 30 seconds where their contingent comes from in the UK and something about the subcamp theme they represent.

Please Note: Contingents should ensure that costumes and any decorations are not likely to cause offence to others (even if no offence is intended). For the safety of all participants - no items that fire projectiles of any kind are permitted as part of individual costumes. This includes ‘toy’ guns, ‘toy’ archery kits and other such similar items.

# CUBJAM PROGRAMME

	Daytime	Evening
Sat 23	Landing to Outer Camp Build your own Gateways	Opening Ceremony Entertainment Cubjams got Talent Signup
Sun 24	Air Space Day inc Inflatable Activities  Gateways completion to be judged late afternoon.	Cubjams got Talent Heats Entertainment
Mon 25 - Thur 28	Your Group will have been allocated to one of four Subcamps, with each camp allocated different elements Monday through to Thursday.  Ropes Day  Activity Day  Trip to Gullivers Land  Trip to Zoo  Packed Lunch required for all offsite activities.	Cubjams got Talent Heats  Entertainment  Thursday Night Campfire & Closing Ceremony
Fri 29	Take off from Outer Camp	





## Ropes Activity Day

Enjoy a day of activities all based on ropes. Whether it be using ropes to crate stack or rope to abseil down the tower, there will be plenty for all the Cubs to try a new activity.



## Activity Day

Water Wars, Human Table Football and Archery are just some of the exciting activities the Cubs have a chance to take part in. Spending the day challenging themselves to complete each activity whether they have tried them before or not.



## Gullivers Land

The Runaway Train in Discovery Bay or Tree Top Swings in Adventure Land. Why not try both when at Gullivers Land? With plenty of rides and attractions, the Cubs are sure to have an exciting and fun filled day out at this magical theme park.

Coach transport to and from Gullivers Land will be provided.



## Whipsnade Zoo

Explore a world of wildlife like never before at Whipsnade Zoo, the largest zoo in the UK. Enjoy a day of adventure making incredible memories. Experience seeing thousands of amazing animals at Whipsnade such as African Lions, Southern White Rhinos or Reticulated Giraffes to name a few.

Coach transport to and from Whipsnade Zoo will be provided.



## Air Space Day

Bouncing in the air on various inflatables will keep the Cubs occupied for hours upon hours. Bouncy castle, total wipeout and more! Inflatables are subject to change dependant on numbers and weather.



## **Craft Activities**

These will reflect Out of this World (Space) - giving the Cubs the opportunity to make things to take home.



## **Talent Show**

We know that Cubs love nothing better than showing off just how amazing they are, no matter what their talent may be. Once we start our Landing in Camp, Cubjam participants of all ages will have the opportunity to compete in qualifiers and heats and the best will take part in our Talent Show Final. More information on the categories and rules will be available on the Cubjam webpage.



## **Media Team**

Our Media Team will be working throughout Cubjam to ensure those at home are kept up to date with the latest Cubjam news. They will be gathering photos, videos and talking to Cubs and adults at Cubjam to promote Cubjam on websites and Social Media.

This Cubjam we are bringing back Cubjam Newsletter which will be broadcast to leaders in a Whats App Group, this will also be available for the Cubs to view (location to be decided nearer the time).

We will be looking to invite VIPs to Cubjam, and also looking for stories from the contingents which Cubjam can help to promote.



## **Cubjam Souvenirs and Clothing**

Included in the price of the event is a Cubjam scarf and badge, Scarfs can be collected on the Friday/Saturday when checking in, and badges will should be ready by the end of Cubjam.

Our 2026 clothing and souvenirs will be available to pre-order from 1st April 2026 – 13th May 2026. These items will only be available to collect at Cubjam. Ordering information to follow shortly.

There will be limited stock of Cubjam items available to purchase during Cubjam along with other Phasels Wood Souvenirs – if you require a particular number of any item we strongly suggest pre-ordering.

# WHAT WILL ADULTS BE EXPECTED TO DO AT CUBJAM?

- Make sure the Cubs have an enjoyable time.
- Help to supervise Cubs (from all contingents) on Cubjam Activities.
- Ensure Cubs are at activities promptly for timeslots (where relevant).
- Help to run Subcamp Activities based on your theme
- Help Cubs work on theme based projects within your subcamp
- Cater for your own contingent
- Provide the Adult to Cub ratio for the Outings
- Drink tea or coffee, relax and ENJOY CUBJAM!!

## **Smoking**

We ask that anyone who wishes to smoke does so out of sight and away from young people. For more information see

<https://www.scouts.org.uk/volunteers/staying-safe-and-safeguarding/supporting-life-issues-and-young-people/dealing-with-an-issue/smoke-free-scouting/introduction/>.

## **Alcohol**

No alcohol is permitted in the 'public' areas of Cubjam.

Should you have alcohol within your group camping area then current Scout Association guidelines should be followed, for more information see:

<https://www.scouts.org.uk/volunteers/staying-safe-and-safeguarding/safe-scouting-cards/scouting-and-alcohol>.



## **Pricing**

Cub - £230.00 each   Leaders (inc free polo tshirt - adults only) - £25.00 each.

## **Young Leaders and Leaders Children**

Young Leaders / Leader's children MUST be counted as a 'child' in the adult to child ratio required by POR for a Residential Experience. It will be the responsibility of the parents to ensure that sufficient insurance cover is in place for them to attend Cubjam. If you wish for leaders children to go on either outing, this will need to be pre-booked and will attract a £20 charge per trip.

### **Leader's Children (Aged birth-5¾ - must be related to an Adult attending Cubjam)**

Leader's children under 5¾ (born after 31st August 2020) will be allowed to attend Cubjam free of charge. They will only be permitted to join in with the craft and watching Cubjam entertainments. They will not be permitted to take part in any of the other activities.

### **Leader's children (Aged 5¾-14 - must be related to an Adult attending Cubjam)**

All Leader's children over 5¾ (born between 31st August 2020 and 31st May 2012) have the following options :

- Pay the Adult Fee – They will only be permitted to join in with the craft and watching Cubjam entertainments. They will not be permitted to take part in any of the other activities.
- Pay the Cub Fee – They will be allowed to fully participate in Cubjam.

### **Leader's children (Aged over 14 - must be related to an Adult attending Cubjam)**

Children aged over 14 who are not part of the Scout/Guide movement will have to pay the Adult Fee. They will only be permitted to join in with the craft and watching Cubjam entertainments. They will not be permitted to take part in any of the other activities.

## **Young Leaders (and other Explorer Scouts) as part of your Contingent**

Young Leaders attending as part of a Contingent MUST pay the Adult Fee. They will only be permitted to join in with the craft and watching Cubjam entertainments. They will not be permitted to take part in any of the other activities.



# EXPLORERS

## Join the Cubjam Team!

Join us in the Explorer & Young Leader sub-camp. As well as helping make the event happen, we will have our own programme of fun and entertainment. Also a great residential experience for those completing their D of E Gold Award!

### **Study Breaks**

We can provide you with the time and space for revision if required, as we know this is close to exam time.

### **Young Leaders (and other Explorer Scouts) as part of the Cubjam Team**

Invested Explorer Scouts are welcome to join the Cubjam team at a rate of £25 for the week. This includes a Pre-Cubjam event in April 2026. Catering is included. For more information, apply as a member of Cubjam Staff through the website form.

## Arrival

You can start setting up your tents from 10:00 on Friday 22 May. If you need to arrange to drop off equipment, or to start setting up tents earlier this can be arranged. Leaders are welcome to camp free of charge on the Friday night. Please contact [info@phaselswood.org.uk](mailto:info@phaselswood.org.uk) to discuss this. Arrival slots will also be allocated to groups closer to the event to help with the flow of traffic.

We kindly ask that all vehicles are removed from camping areas by midday on Saturday.

Upon arrival, participants should make their way to our event reception located in the office at the top of the car park.

Please note, dogs are not allowed on site at any time, except for guide/hearing dogs.

## Departure

Departure on Friday 29 May can be anytime from 9.00am onwards. Cubjam will be providing staff to assist with departure until 16:00 on Friday. Should it be more convenient for your travel arrangements, Groups are welcome to stay until Saturday midday for no additional charge.





## **Site Information**

### **About the site**

Phasels Wood is comprised of 95 acres of meadows and woodland and has purpose built infrastructure to support an event the scale of Cubjam.

There is easy access to the site from the A41, the entrance is in the second lay-by from the M25 roundabout. There is a sign just before the lay-by: 'Scout Camp access via lay-by' a mile and a half from Junction 20 of the M25 and whilst Phasels Wood can feel like it is in the middle of the countryside, all the local services you would expect are available in nearby Hemel Hempstead.

We plan to use the main meadow and part of the woodland for the Group camping, with the events fields used for a number of activities and to provide all the parking required.

### **Toilets & Showers**

Phasels Wood has plenty of toilet, shower and washing facilities.

There are also a number of National Key Scheme (RADAR key) wet rooms for those with additional needs, along with accessible toilet and washroom provision. These can be booked in advance. Booking can be made via email to [info@phaselswood.org.uk](mailto:info@phaselswood.org.uk)

## Water

Drinking water is available from taps conveniently situated throughout the site.

## Camping Areas

Groups will be pre-allocated camping areas corresponding to their numbers in camp. Should you have a particular preference please let the bookings team know in advance of the event and we will endeavour to allocate on a first come, first served basis.

Tents will need to be pitched as close together as possible – with guylines crossed wherever possible. You may not get the same amount of space as you would when camping on your own and you will need to carefully consider the tentage and equipment you bring to Cubjam.

Our Event Support team will ensure that fire breaks are left at regular intervals throughout the subcamp.

It is the group leader's responsibility to ensure that all Scout guidelines are adhered to within their own camping area.

Caravans & motorhomes – we understand that some campers may wish to bring a caravan or motorhome, particularly for health reasons - please contact us for further information. Any provision for these will not be in the main camping areas.

## Equipment Hire



### Altar Fires

Altar fires and grids are available to hire.

**Free for this event**



### Benches & Tables

We offer craft and cooking tables for hire as well as table and benches.

**From £5.00**



### Tents

We offer a range of 3 and 5 man tents for hire with capacity for over 300.

**From £3.00**  
per person per night



### Marquees

Our marquees come in a range of sizes from 6m x 6m to 100m x 12m.

**From £150.00**  
per 24 hour\*

We also have larger equipment such as cookers and lighting available either on site or for your own event at another centre.

Please contact us for more information and to discuss any requirements.

## **Waste & Recycling**

Hertfordshire Scouts work with Cawleys for their waste disposal. As Cawleys sort the waste at their plant, there is no need to separate it before disposal in our bins.

The bins are situated at the end of the car park outside the main reception building.

## **Internet**

Phasels Wood has network dependent data coverage, which can vary through the site. There is no public wi-fi access, but we can make arrangements through the Cubjam office should it be required in an emergency.

## **Mobile Phone Charging**

We have phone charging lockers available for adult participants to use free of charge, on a first come first served basis. Please provide your own mains charger.

You can register for a locker at reception. Please make sure you return the key - failure to do so will result in a £25 key replacement charge being made to your group.

## **Grocery Deliveries**

Any deliveries must be booked between 9.00 and 21.30, they must be clearly marked with a Group Name and contact number, as well as that of the person ordering. You must be available on site to receive your order.

Delivery vehicles are unlikely to be permitted to drive to individual camp areas at Phasels Wood. It is your responsibility to meet the delivery at designated points, these will be at the gates to camping areas.

## **Providore & Woodland Coffee**

Our on-site providore and coffee shop will be open from 9.00 – 21.00 throughout the event. Souvenirs, soft drinks, hot drinks and sweets will be available to purchase from the Providore. Cash and card accepted.

## **Generators**

Generators must NOT be switched on before 07:00 and should be switched off no later than 22:00.

Generators MUST be used in accordance with the manufacturer's guidelines. We strongly recommend that an earth rod is used in compliance with BS7671. Generator fuel MUST be stored in BS-approved safety containers. Generators should be diesel, unless no fueling required.

## **Fires & Cooking**

Altar fires (1 per group) can be hired free of charge. Please let us know by e-mail, [info@phaselswood.org.uk](mailto:info@phaselswood.org.uk), no later than 14 May if required. It is highly unlikely there will be any available without pre-booking. No ground fires are permitted.

All cooking should be on gas. Please ensure that your gas pipes are in good condition and ideally have been replaced within the past 5 years. Gas bottles MUST be kept outside of the cooking tents on a suitable pipe.

For more information about Gas safety with the Scout Association see Scout Factsheet FS120347.

## **First Aid**

Each group will be responsible for providing first aid and dealing with medicines for its participants.

For prescribed medications that require refrigeration please ask at reception when on site.

With the ever increasing use of OSM and to simplify registration, we will not be gathering individual participants medical and contact information. If required we will contact group leaders using the contact information provided on the Guest Information Form which will be sent out prior to the event.

We will have a central first aid team to handle any incidents that occur outside of your camping area and to give advice/assistance to groups.

## **Event Safety Guidance**

Phasels Wood has comprehensive safety procedures in place, details of these will be sent to you prior to the event. Please ensure that your group are made familiar with them.



## **Ice Pack Freezing**

Phasels Wood have a communal freezer for ice pack freezing. Please ensure your blocks are in a bag and clearly marked with your Group name. You will be given the code for the door in your arrival pack.

Sorry, but to allow enough space for ice packs, Groups cannot store food in the communal freezer.

## **Security**

Phasels Wood is a fully enclosed site, entrances are barrier controlled and all key areas and access routes are covered by CCTV.

Access to the site will be restricted to Cubjam participants and Scout/Guide visitors.

Visitors will be permitted to contingents - there will be an electronic booking process for visitors in early 2026. Visitors will not be able to gain access to the Cubjam site unless they have pre-booked.

## **Nights Away Permits**

Every Group will require a leader with a 'campsite' nights away permit.

## **Adult to Young Person Ratio**

Adult to young person ratio should be adhered to as stated in POR.

## **Post & Parcels**

All post should be clearly marked with the intended recipients name and their Scout Group.

Should you wish any other 3rd party deliveries to be accepted by the site eg, Amazon Prime. Please ensure they are easily identifiable and that the delivery instructions are marked to reception. No delivery will be accepted before 09.00. Deliveries prior to arrival are by arrangement only.

## **Drones**

Phasels Wood Activity Centre operates a strict no drones policy.





## How To Find Us

Phasels Wood Activity Centre is just 3 miles from Junction 20 Northbound of the M25 towards Hemel Hempstead on the A41. The entrance is in the second lay-by from the M25 roundabout. There is a sign just before the lay-by: 'Scout Camp access via lay-by'. **There is no postal address or postcode for the main entrance.** We recommend using Google maps to find us!

On arrival drive up to the automatic barrier and follow the appropriate signs. At busy times you will be directed to the nearest available parking and therefore you may have a 5-minute walk. The barrier is automatic between 08:00 and 22:30. Outside these times please make alternative arrangements for access.

If arriving via coach, please park in the first car park off the A41 and walk to the camp centre.

## **Booking and Payment Information**

Please book via the online portal.

### **Key Dates to Remember**

25% deposit due 14 days from provisional booking.

Mid February 2026

Update requested on approximate attendee numbers.

March 2026

Sub-camps allocated and pre-event programme activities available.

Mid April 2026

Confirm final numbers.

Mid May 2026

Balance invoice issued complete and return Guest Information Form.

Booking will close 1 May 2026 or when event places are full.

Booking are made in accordance with Hertfordshire Scouts standard terms and conditions available on our website.

## **Contact Info**

General information about Phasels Wood Activity Centre is available at [www.phaselswood.org.uk](http://www.phaselswood.org.uk)

Cubjam information can be found at [www.cubjam.org.uk](http://www.cubjam.org.uk)

E-mail: [info@phaselswood.org.uk](mailto:info@phaselswood.org.uk)

Phone: 0208 236 0040

Post:

Cubjam, Phasels Wood Activity Centre, Kings Langley,  
Hertfordshire, WD4 9NA.



Cubjam is an operating name of Hertfordshire County Scout Council.  
Phasels Wood Activity Centre is a Hertfordshire Scouts Activity Centre.

Hertfordshire County Scout Council is a Registered Charity.

Charity No: 302606 Scottish Charity No: 39650 VAT registration No: 761 4558 19